



ARANI

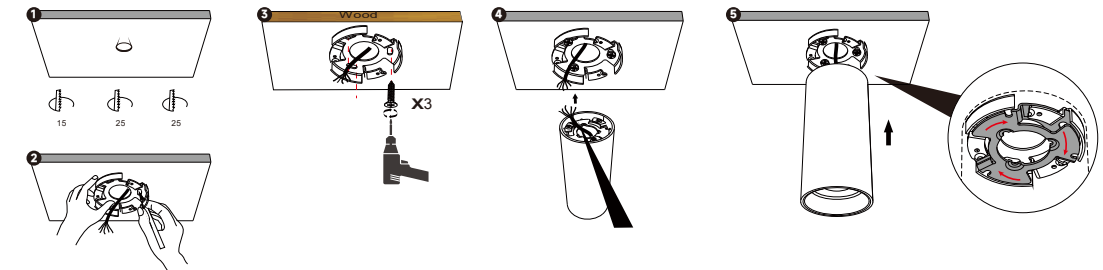
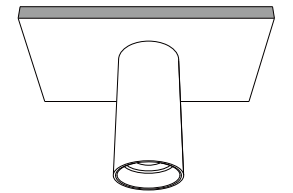


## ARANI

A modern ceiling and pendant light, expertly engineered to deliver maximum performance with a sleek, contemporary design.

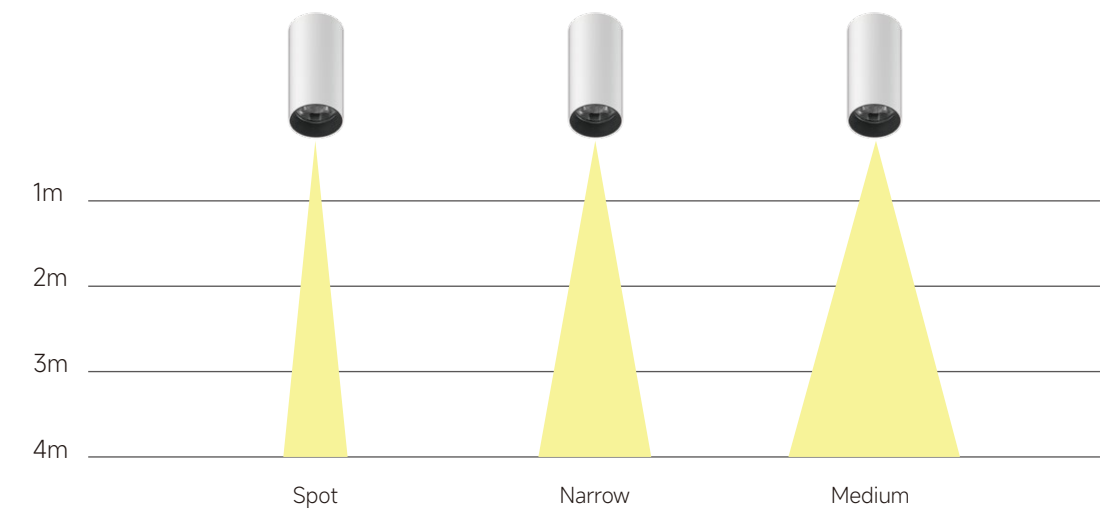
### Safety Notes

1. Switch off the electricity at the mains before commencing installation or changing the lamp. If a fuse box is used, remove the appropriate circuit fuse to avoid accidental switching on of the mains supply.
2. Connect to a 220V–240V supply in accordance with IEE regulations.
3. Ensure all connections are secure, with no loose strands.
4. Ensure fire regulations are not breached when installing your lights.
5. If you are in any doubt regarding these instructions, consult a qualified electrician.



### Very easy to change lens (twist and lock)

Spot, narrow and medium beam angles are available for different lighting applications





ARANI - Ø55 11W



ARANI - Ø72 15W



ARANI - Ø80 21W



ARANI - 90 28W

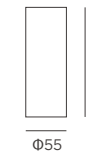


ARANI

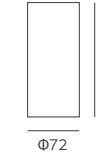
Surface - Ø55 & Ø72



White Black



ARANI - Ø55



ARANI - Ø72

Surface Mounted

**ARANI**



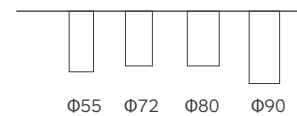
**Features**

- Cylindrical surface-mounted light constructed from aluminium.
- Features an ultra-slim housing design with integrated LED driver.
- Engineered with an optimised passive cooling system for enhanced performance.
- Includes an interchangeable decorative ring, suitable for various lighting applications.
- High luminous efficiency and uniform light distribution ensured by precision lens technology.
- Twist-and-lock mechanism allows easy lens changes to select between spot, narrow, or medium beam angles.

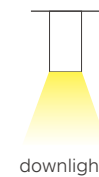
**Specifications**

- Dimming Mode: ON/OFF
- Available Sizes: Ø55mm, Ø72mm, Ø90mm
- Installation Method: Surface-mounted

**Type**



**Light distribution**



**Decoration ring**



Black Golden White

**11W 720lm-800lm**

Code	Size	System LM	LED W	System W	CRI	CCT	Beam
ARANI-11-3-18	Ø55*150mm	380 lm	9W	11W	90	3000K	18°
ARANI-11-4-18	Ø55*150mm	400 lm	9W	11W			
ARANI-11-3-24	Ø55*150mm	380 lm	9W	11W	90	3000K	24°
ARANI-11-4-24	Ø55*150mm	400 lm	9W	11W			
ARANI-11-3-36	Ø55*150mm	380 lm	9W	11W	90	3000K	36°
ARANI-11-4-36	Ø55*150mm	400 lm	9W	11W			

**15W 1200lm-1300lm**

ARANI-15-3-15	Ø72*160mm	1200 lm	13W	15W	90	3000K	15°
ARANI-15-4-15	Ø72*160mm	1300 lm	13W	15W			
ARANI-15-3-25	Ø72*160mm	1200 lm	13W	15W	90	3000K	25°
ARANI-15-4-25	Ø72*160mm	1300 lm	13W	15W			
ARANI-15-3-30	Ø72*160mm	1200 lm	13W	15W	90	3000K	30°
ARANI-15-4-30	Ø72*160mm	1300 lm	13W	15W			

**21W 1600lm-1700lm**

ARANI-21-3-15	Ø72*160mm	1600 lm	18W	21W	90	3000K	15°
ARANI-21-4-15	Ø72*160mm	1700 lm	18W	21W			
ARANI-21-3-25	Ø72*160mm	1600 lm	18W	21W	90	3000K	25°
ARANI-21-4-25	Ø72*160mm	1700 lm	18W	21W			
ARANI-21-3-30	Ø72*160mm	1600 lm	18W	21W	90	3000K	30°
ARANI-21-4-30	Ø72*160mm	1700 lm	18W	21W			

# ARANI Series

## SURFACE

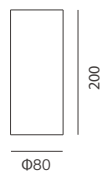


### ARANI

Surface - Ø80 & Ø90



White Black



ARANI - Ø80



ARANI - Ø90

#### 21W 1400lm-1600lm

Code	Size	System LM	LED W	System W	CRI	CCT	Beam
ARANI-21-SW	Ø80*200mm	1400lm-1600lm	18W	21W	90	3000K 4000K 5000K	60°

#### 28W 2700lm-2900lm

ARANI-28-3-18	Ø90*230mm	2700 lm	25W	28W	90	3000K	18°
ARANI-28-4-18	Ø90*230mm	2900 lm	25W	28W		4000K	
ARANI-28-3-30	Ø90*230mm	2700 lm	25W	28W	90	3000K	30°
ARANI-28-4-30	Ø90*230mm	2900 lm	25W	28W		4000K	
ARANI-28-3-45	Ø90*230mm	2700 lm	25W	28W	90	3000K	45°
ARANI-28-4-45	Ø90*230mm	2900 lm	25W	28W		4000K	

