
 www.impactlightingsolutions.com

 01865 989 830

 sales@impactls.com

 [impactlightingsolutions](https://www.linkedin.com/company/impactlightingsolutions)

 [impact_lightingsolutions](https://www.instagram.com/impact_lightingsolutions)

MORE INFORMATION

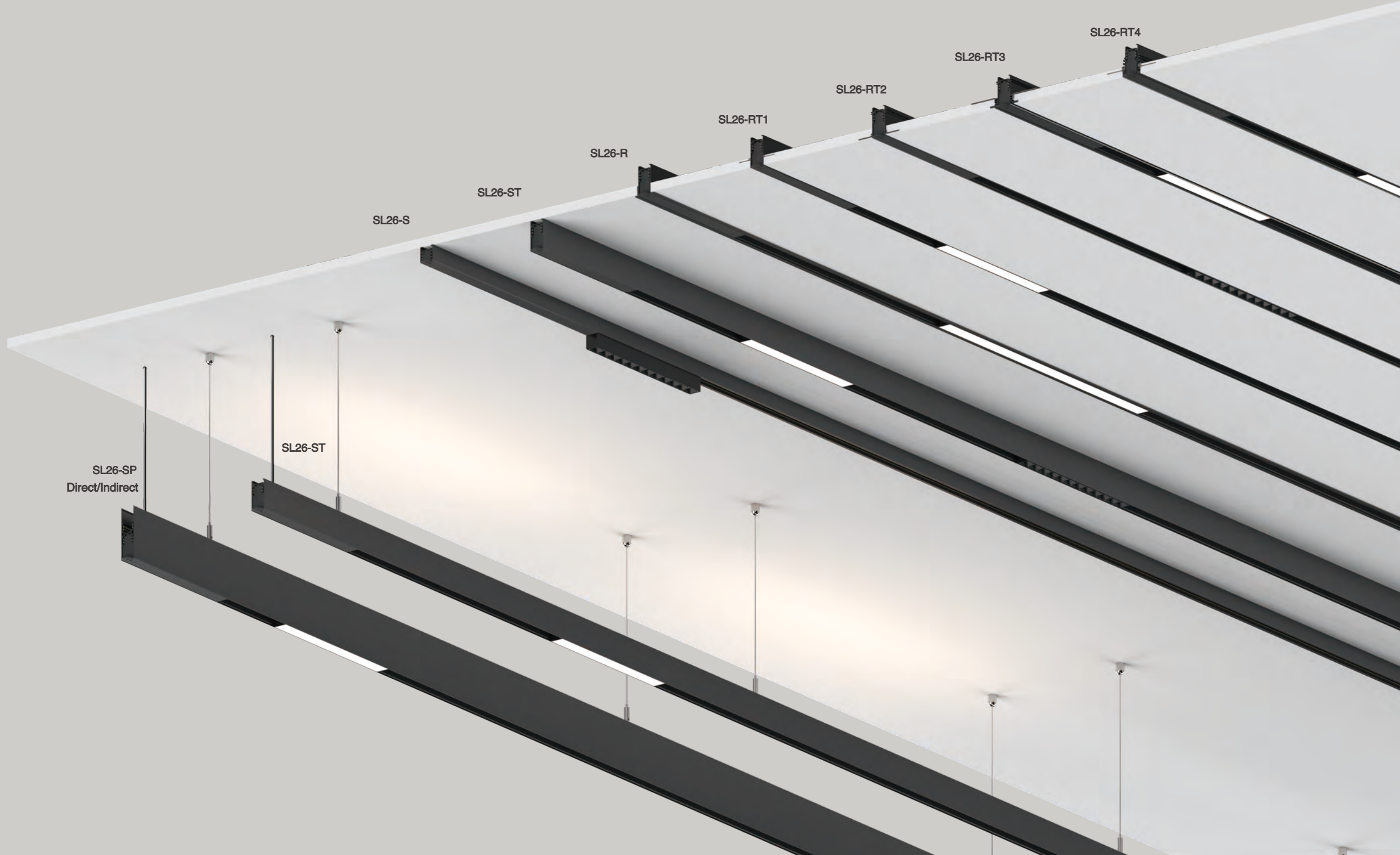


SYSTEM *LINK 26*

www.impactlightingsolutions.com

SYSTEM *LINK 26*

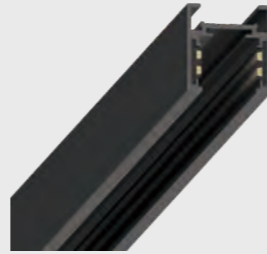
Low Voltage Track System





1

Surface-mounted Track



SL26-S
Surface-mounted

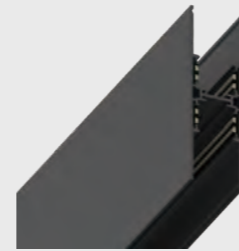


SL26-ST
Standard track



2

Suspended Track



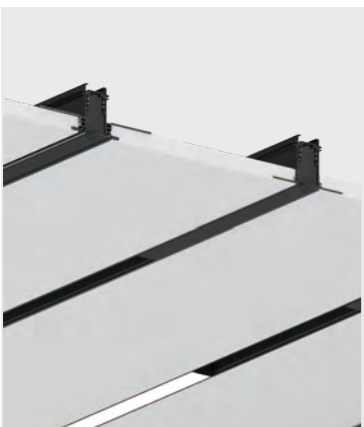
SL26-SP
Direct/Indirect



SL26-ST
Standard track



SYSTEM LINK 26
DC48V Track

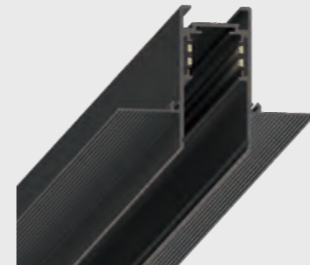


3

Recessed Track



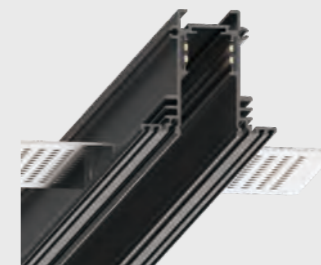
SL26-R
With trim



SL26-RT1
Compatible with 1/2" ceiling



SL26-RT2
Easy installation



SL26-RT3
With adjustable trimless recessed installation kit

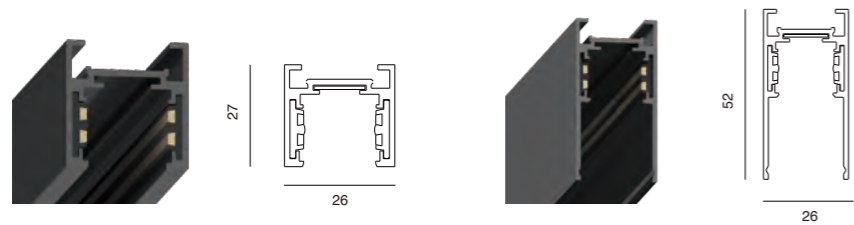


S26-RT4
Compatible with various thickness of ceiling



Surface-mounted

Surface-mounted Track



Order Options

Code	Description	Length mm	Power supply	Installation
SL26-S	surface-mounted	1000/2000/3000	built-in available	surface-mounted
SL26-SP	standard	1000/2000/3000	built-in available	surface/ suspended

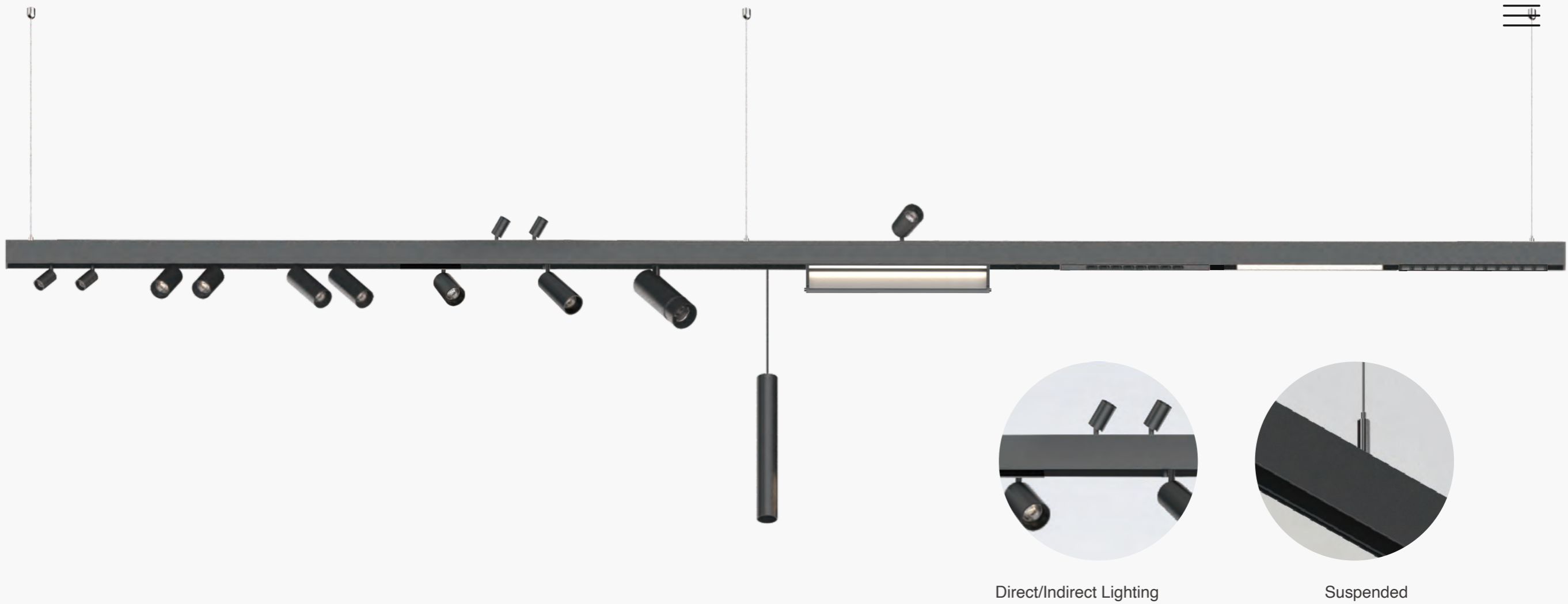
Accessories

SL26-S

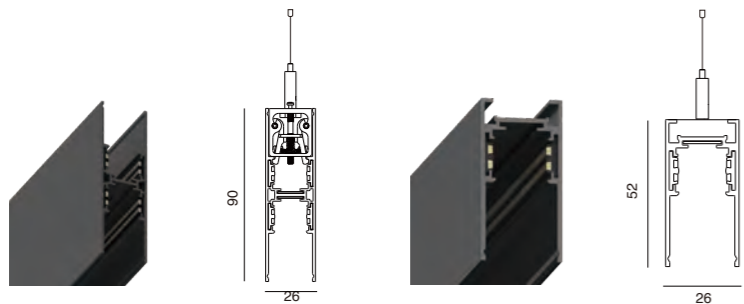


SL26-ST





Suspended Track

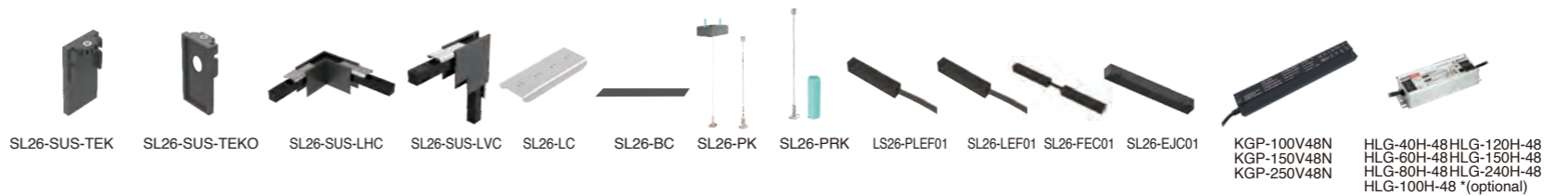


Order Options

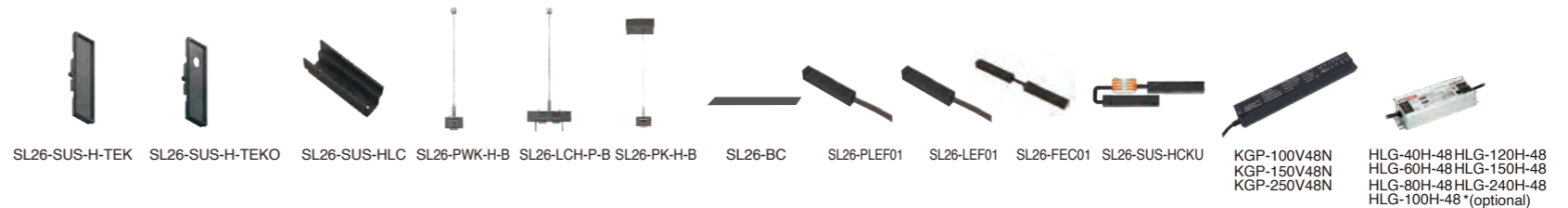
Code	Description	Length NN	Power supply	Installation
SL26-ST	standard	1000/2000/3000	built-in available	surface-mounted
SL26-SP	Direct/indirect lighting	1000/2000/3000	built-in available	surface/ suspended

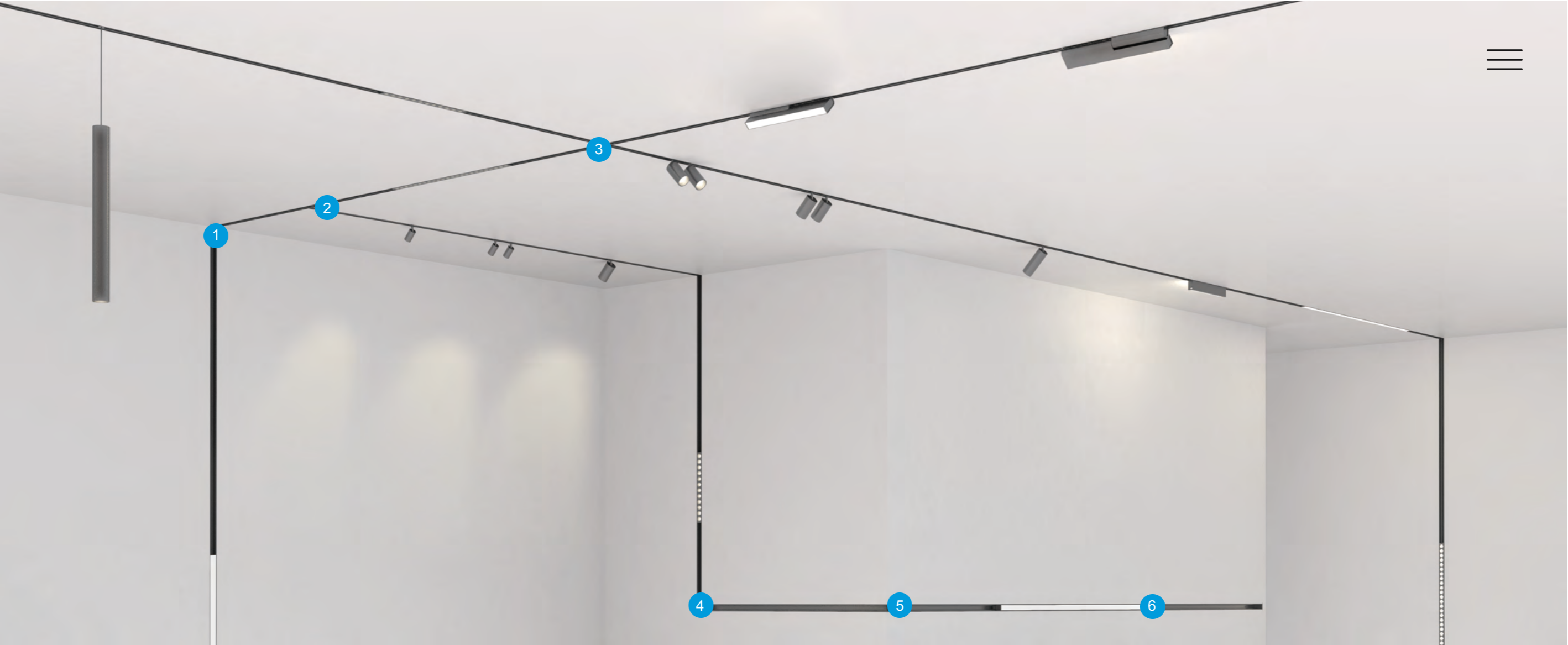
Accessories

SL26-ST

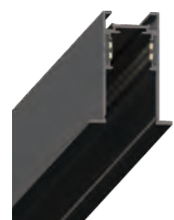


SL26-SP

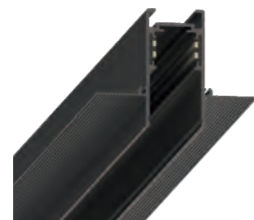




Recessed Track



SL26-R



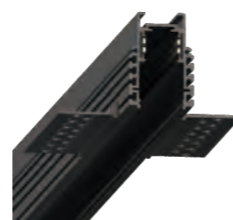
SL26-RT1



SL26-RT2



SL26-RT3



SL26-RT4

Corner

- 1. 'L' shape vertical corner
- 2. 'T' shape corner
- 3. 'X' shape corner
- 4. 'L' shape corner
- 5. 'L' shape outer corner
- 6. Linear connector

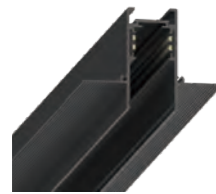
Order Options

Code	Description	LengthNN	Power supply	Installation
SL26-R	with trim	1000/2000/3000	built-in available	recessed with trim
SL26-RT1	compatible with ceiling	1000/2000/3000	built-in available	trimless recessed
SL26-RT2	easy installation	1000/2000/3000	built-in available	trimless recessed
SL26-RT3	with adjustable trimless recessed installation kit	1000/2000/3000	built-in available	trimless recessed
SL26-RT4	compatible with various thickness of ceiling	1000/2000/3000	built-in available	trimless recessed

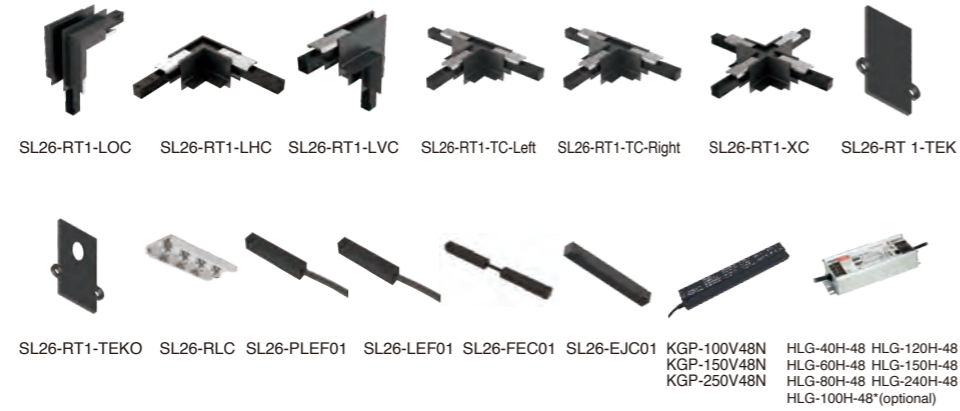
Accessories



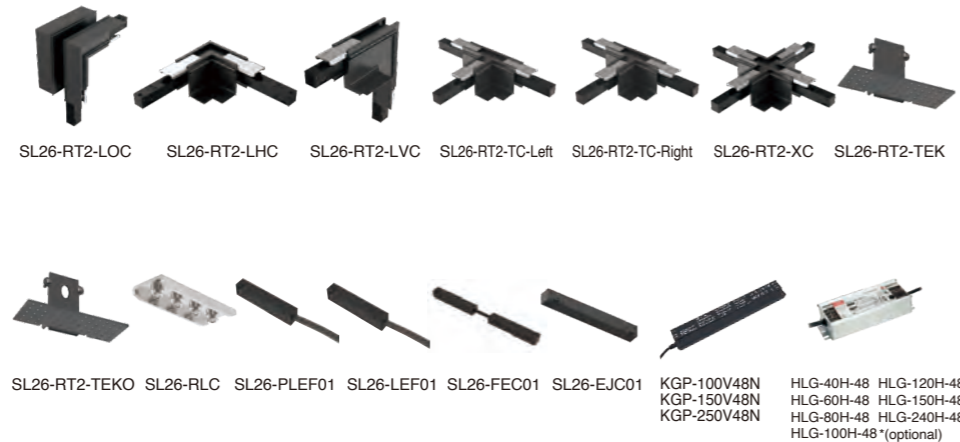
SL26-R



SL26-RT1



SL26-RT2



Accessories



SL26-RT3



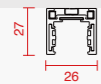
SL26-RT4



*Several plastic anti-deformation accessories have been put into the tracks, so the tracks can remain the original shape, despite that they are installed into the ceiling board.

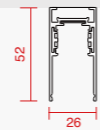
Installation

Surface-mounted track



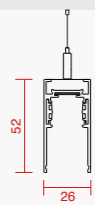
Code: SL26-S
Description: surface-mounted Length: 1000/2000/3000(mm)
Color: RAL9005 black, RAL9016 white

Surface-mounted track



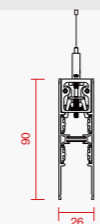
Code: SL26-ST
Description: standard Length: 1000/2000/3000(mm)
Color: RAL9005 black, RAL9016 white

Suspended track

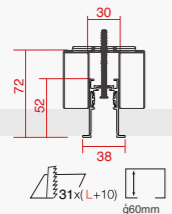


Code: SL26-ST
Description: standard Length: 1000/2000/3000(mm)
Color: RAL9005 black, RAL9016 white

Suspended track

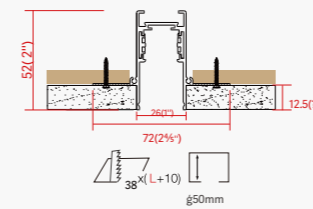


Code: SL26-SP
Description: downward & upward lighting Length: 1000/2000/3000(mm)
Color: RAL9005 black, RAL9016 white

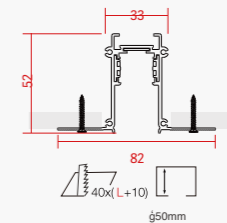


Code: SL26-R
Description: recessed with trim Length: 1000/2000/3000(mm)
Color: RAL9005 black, RAL9016 white

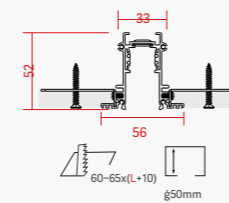
Recessed track



Code: SL26-RT1
Description: compatible with 1/2" ceiling Length: 1000/2000/3000(mm)
Color: RAL9005 black, RAL9016 white

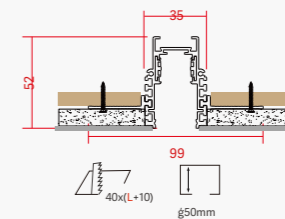


Code: SL26-RT2
Description: easy installation Length: 1000/2000/3000(mm)
Color: RAL9005 black, RAL9016 white



Code: SL26-RT3
Description: with adjustable trimless recessed installation kit Length: 1000/2000/3000(mm)
Color: RAL9005 black, RAL9016 white

*Compatible with the ceiling of thickness between 12.5-20.5mm



Code: SL26-RT4
Description: compatible with various thickness of ceiling Length: 1000/2000/3000(mm)
Color: RAL9005 black, RAL9016 white

*Compatible with the ceiling of thickness: 5mm/9mm/12.5mm/15mm/18mm/20mm/25mm

*All dimensions in the catalogue in mm

Inserts for track

Spotlight Insert



SL26-253



SL26-255



SL26-408



SL26-4016



SL26-4012



SL26-4024



SL26-5510



SL26-7219
SL26-7226



SL26-S96

Accent Light Insert



SL26-1902



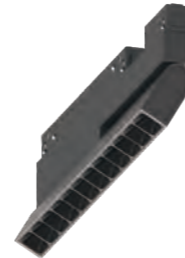
SL26-1906



SL26-2808



SL26-28012



SL26-28013



SL26-31515



SL26-A280
SL26-A560



Inserts for track

General Light Insert



SL26-G280
SL26-G560
SL26-G840
SL26-G1120



SL26-SG280



SL26-315



SL26-L600

Comfort Light Insert



SL26-C280
SL26-C560
SL26-C840
SL26-C1120

Wall Washer Insert



SL26-W280
SL26-W560

Downlight Insert



SL26-R72



SL26-R72T

Decorative Light Insert



SL26-P120



SL26-P300



SL26-P160



SL26-P150G



SL26-P150C

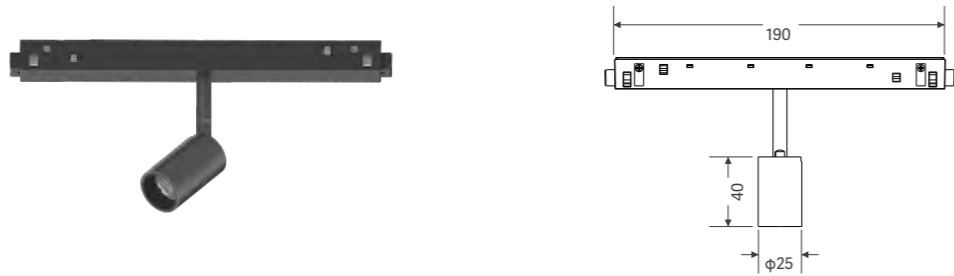


SL26-P40



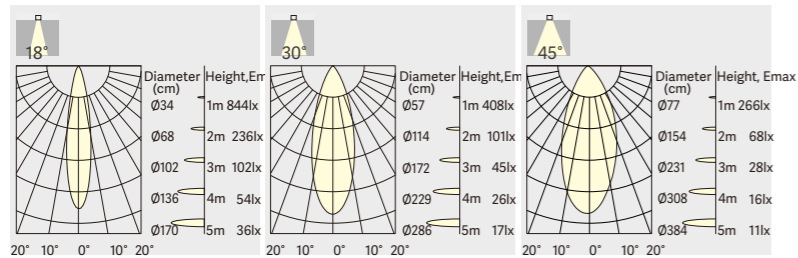
SL26-P55

SL26-253-3W Module



Module Distribution - 3000K

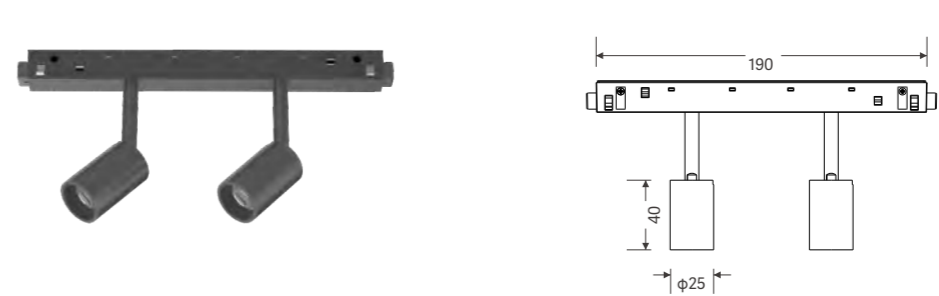
3W 180lm-190lm



Order Options

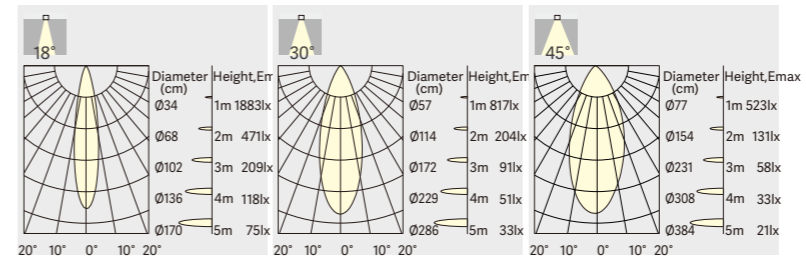
SL26-253						
Code	System LM	System W	Input Voltage	CRI	CCT	Beam
SL26-253318	180Lm	3W	DC48V	90	3000K	18°
SL26-253418	190Lm				4000K	
SL26-253330	180Lm	3W	DC48V	90	3000K	30°
SL26-253430	190Lm				4000K	
SL26-253345	180Lm	3W	DC48V	90	3000K	45°
SL26-253445	190Lm				4000K	

SL26-255-5W Module



Module Distribution - 3000K

5W 350lm-380lm



Order Options

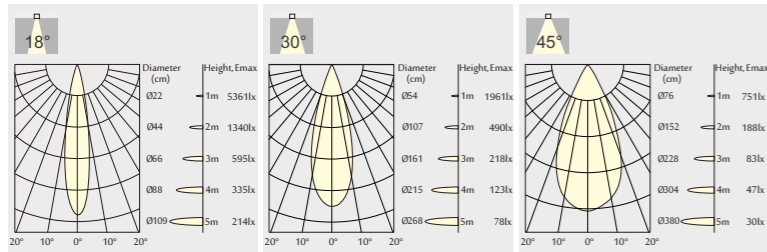
SL26-255						
Code	System LM	System W	Input Voltage	CRI	CCT	Beam
SL26-255318	350Lm	5W	DC48V	90	3000K	18°
SL26-255418	380Lm				4000K	
SL26-255330	350Lm	5W	DC48V	90	3000K	30°
SL26-255430	380Lm				4000K	
SL26-255345	350Lm	5W	DC48V	90	3000K	45°
SL26-255445	380Lm				4000K	

SL26-408-8W Module



Module Distribution - 3000K

8W 420lm-620lm



Order Options

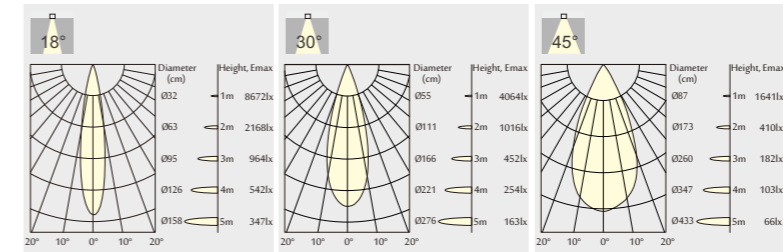
SL26-408						
Code	System LM	System W	Input Voltage	CRI	CCT	Beam
SL26-408318	580Lm				3000K	
SL26-408418	620Lm	8W	DC48V	90	4000K	18°
SL26-408330	580Lm				3000K	
SL26-408430	620Lm	8W	DC48V	90	4000K	30°
SL26-408345	580Lm				3000K	
SL26-408445	620Lm	8W	DC48V	90	4000K	45°

SL26-4016-5W Module



Module Distribution - 3000K

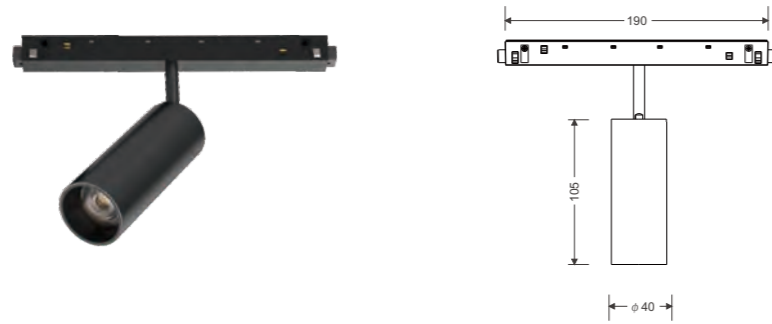
16W 850lm-1200lm



Order Options

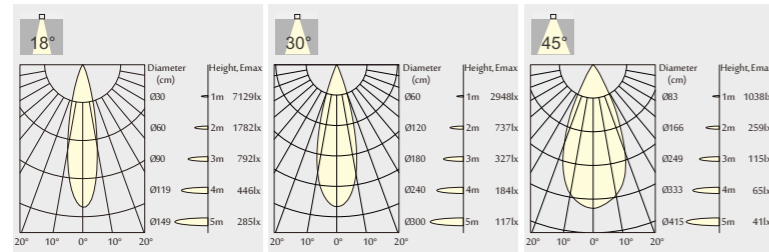
SL26-4016						
Code	System LM	System W	Input Voltage	CRI	CCT	Beam
SL26-4016318	1100Lm				3000K	
SL26-4016418	1200Lm	16W	DC48V	90	4000K	18°
SL26-4016330	1100Lm				3000K	
SL26-4016430	1200Lm	16W	DC48V	90	4000K	30°
SL26-4016345	850Lm				3000K	
SL26-4016445	900Lm	16W	DC48V	90	4000K	45°

SL26-4012-2W Module



Module Distribution - 3000K

12W 600lm-800lm



Order Options

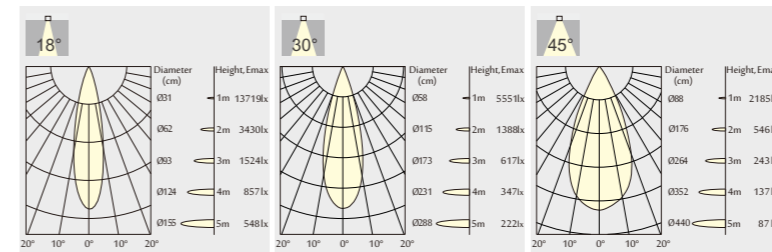
SL26-4012						
Code	System LM	System W	Input Voltage	CRI	CCT	Beam
SL26-4012318	750Lm	12W	DC48V	90	3000K	18°
SL26-4012418	800Lm				4000K	
SL26-4012330	750Lm	12W	DC48V	90	3000K	30°
SL26-4012430	800Lm				4000K	
SL26-4012345	600Lm	12W	DC48V	90	3000K	45°
SL26-4012445	650Lm				4000K	

SL26-4024-24W Module



Module Distribution - 3000K

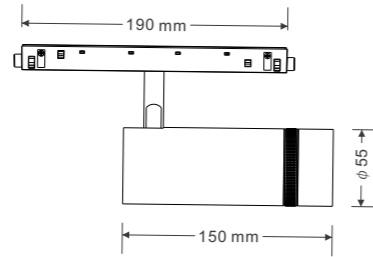
24W 1200lm-1600lm



Order Options

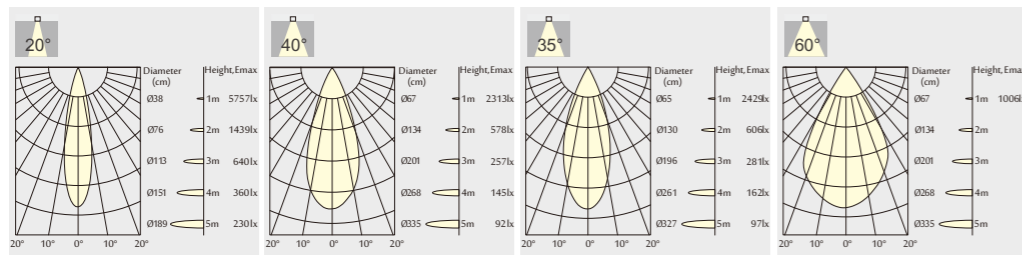
SL26-4024						
Code	System LM	System W	Input Voltage	CRI	CCT	Beam
SL26-4024318	1500Lm	24W	DC48V	90	3000K	18°
SL26-4024418	1600Lm				4000K	
SL26-4024330	1500Lm	24W	DC48V	90	3000K	30°
SL26-4024430	1600Lm				4000K	
SL26-4024345	1200Lm	24W	DC48V	90	3000K	45°
SL26-4024445	1300Lm				4000K	

SL26-5510-10W Module



Module Distribution - 3000K

10W 750lm-850lm

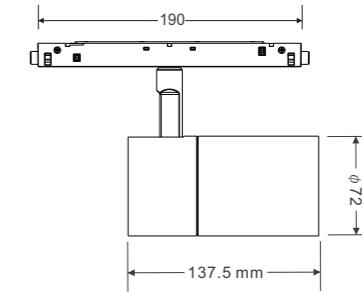


Order Options

SL26-5510

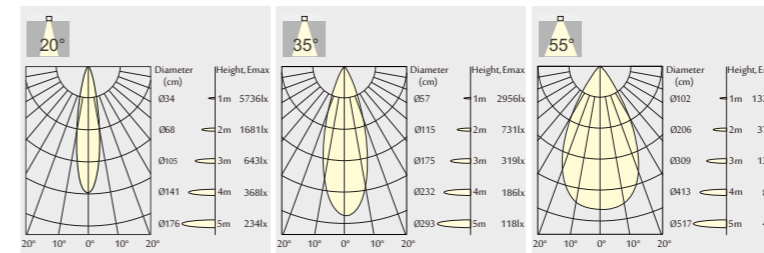
Code	System LM	System W	Input Voltage	CRI	CCT	Beam
SL26-551032040	800Lm	10W	DC48V	90	3000K	20°-40°
SL26-551042040	850Lm	10W	DC48V	90	4000K	20°-40°
SL26-551033560	750Lm	10W	DC48V	90	3000K	35°-60°
SL26-551034560	800Lm	10W	DC48V	90	4000K	35°-60°

SL26-7219-19W Module



Module Distribution - 3000K

19W 1700lm-1800lm

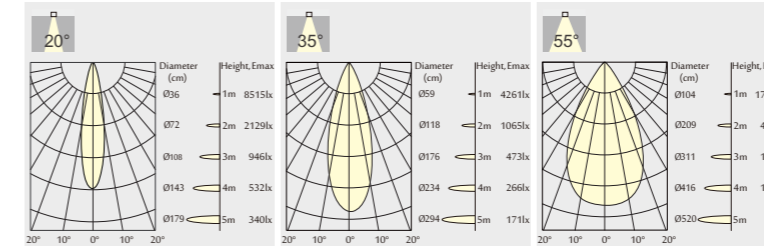


Order Options

SL26-7219

Code	System LM	System W	Input Voltage	CRI	CCT	Beam
SL26-7219320	1700Lm	19W	DC48V	90	3000K	20°
SL26-7219320	1800Lm	19W	DC48V	90	4000K	20°
SL26-7219335	1700Lm	19W	DC48V	90	3000K	35°
SL26-7219335	1800Lm	19W	DC48V	90	4000K	35°
SL26-7219355	1700Lm	19W	DC48V	90	3000K	55°
SL26-7219455	1800Lm	19W	DC48V	90	4000K	55°

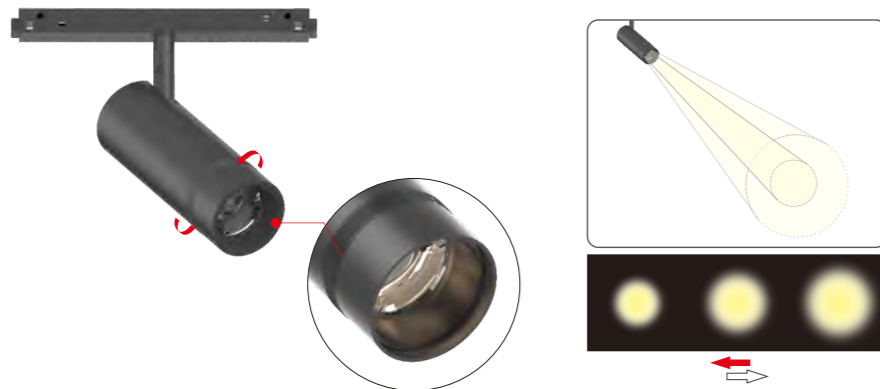
26W 2300lm-2500lm



Order Options

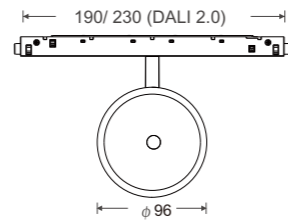
SL26-7226

Code	System LM	System W	Input Voltage	CRI	CCT	Beam
SL26-7226320	2300Lm	26W	DC48V	90	3000K	20°
SL26-7226320	2500Lm	26W	DC48V	90	4000K	20°
SL26-7226335	2300Lm	26W	DC48V	90	3000K	35°
SL26-7226335	2500Lm	26W	DC48V	90	4000K	35°
SL26-7226355	2300Lm	26W	DC48V	90	3000K	55°
SL26-7226455	2500Lm	26W	DC48V	90	4000K	55°



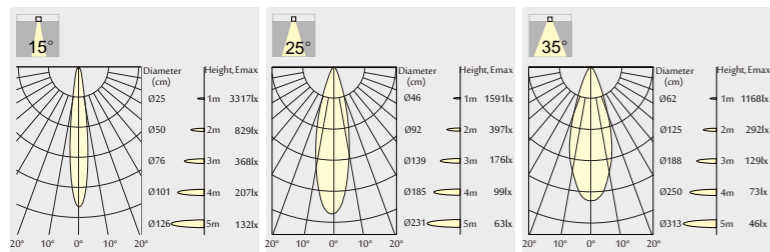
ZOOM Lens from narrow beam angle 20°-35° to wide beam angle 40°-60°

SL26-S96-9W Module



Module Distribution - 3000K

9W 720lm-750lm

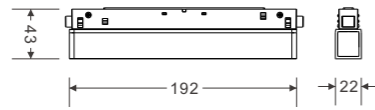


Order Options

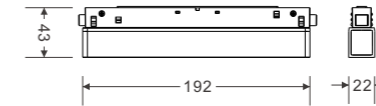
Code	System LM	System W	Input Voltage	CRI	CCT	Beam
SL26-S969315	720Lm	9W	DC48V	90	3000K	15°
SL26-S969415	780Lm				4000K	
SL26-S969325	750Lm	9W	DC48V	90	3000K	25°
SL26-S969425	830Lm				4000K	
SL26-S969335	750Lm	9W	DC48V	90	3000K	35°
SL26-S969435	830Lm				4000K	



SL26-1902-3W Module

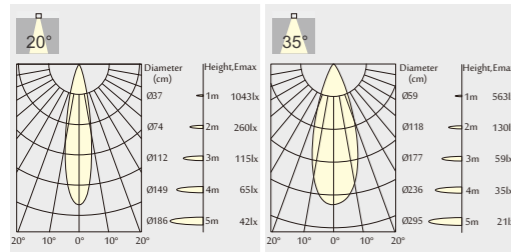


SL26-1906-7W Module



Module Distribution - 3000K

3W 200lm-250lm

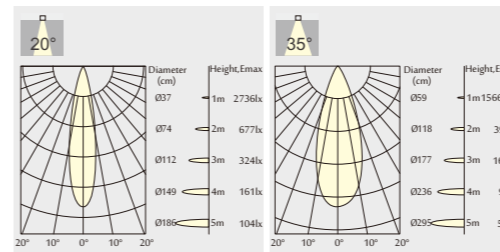


Order Options

SL261902						
Code	System LM	System W	Input Voltage	CRI	CCT	Beam
SL26-19023320	180Lm	3W	DC48V	90	3000K	20°
SL26-19023420	200Lm	3W	DC48V	90	4000K	20°
SL26-19023335	180Lm	3W	DC48V	90	3000K	35°
SL26-19023435	200Lm	3W	DC48V	90	4000K	35°

Module Distribution - 3000K

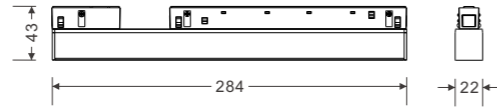
7W 600lm-650lm



Order Options

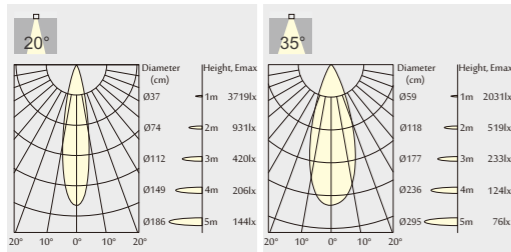
SL261906						
Code	System LM	System W	Input Voltage	CRI	CCT	Beam
SL26-19067320	550Lm	7W	DC48V	90	3000K	20°
SL26-19067420	600Lm	7W	DC48V	90	4000K	20°
SL26-19067335	550Lm	7W	DC48V	90	3000K	35°
SL26-19067435	600Lm	7W	DC48V	90	4000K	35°

SL26-2808-9W Module



Module distribution for 3000K

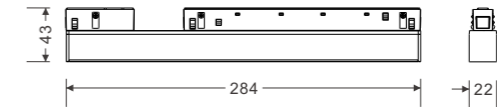
9W 750lm-800lm



Order Options

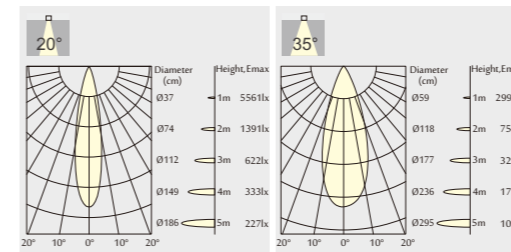
SL26-2808						
Code	System LM	System W	Input Voltage	CRI	CCT	Beam
SL26-28089320	750Lm					
SL26-28089420	800Lm	9W	DC48V	90	3000K	20°
SL26-28089335	750Lm					
SL26-28089435	800Lm	9W	DC48V	90	3000K	35°

SL26-28012-13W Module



Module distribution for 3000K

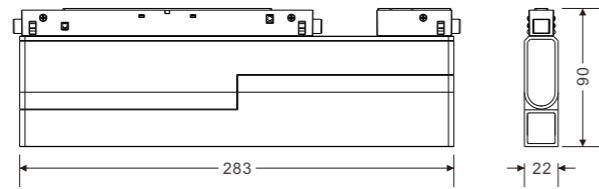
13W 1100lm-1200lm



Order Options

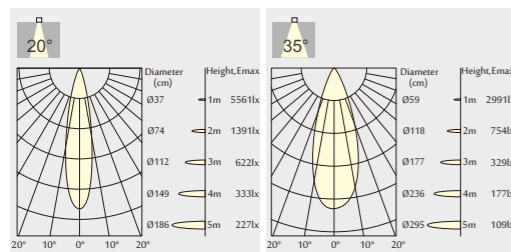
SL26-28012						
Code	System LM	System W	Input Voltage	CRI	CCT	Beam
SL26-2801213320	1100Lm					
SL26-2801213420	1200Lm	13W	DC48V	90	3000K	20°
SL26-2801213335	1100Lm					
SL26-2801213435	1200Lm	13W	DC48V	90	3000K	35°

SL26-28013-13W Module



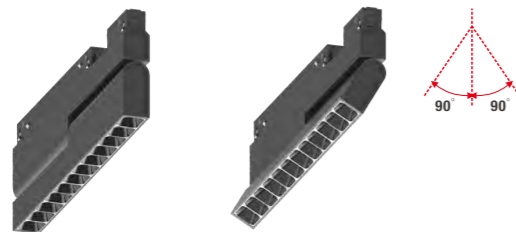
Module distribution for 3000K

13W 1100lm-1200lm

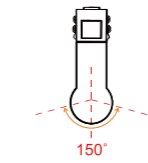


Order Options

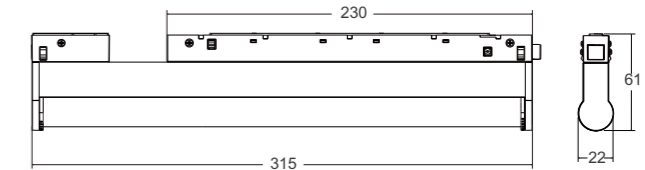
SL26-28013						
Code	System LM	System W	Input Voltage	CRI	CCT	Beam
SL26-28013320	1100Lm	13W	DC48V	90	3000K	20°
SL26-28013420	1200Lm				4000K	
SL26-28013335	1100Lm	13W	DC48V	90	3000K	35°
SL26-28013435	1200Lm				4000K	



SL26-31515-15W Module

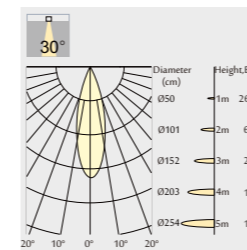


Adjustable range 150°



Module distribution for 3000K

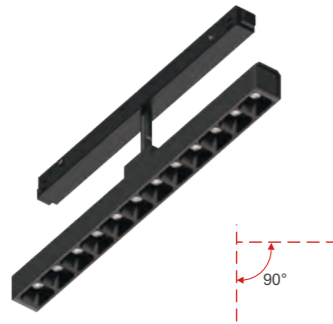
15W 1100lm-1180lm



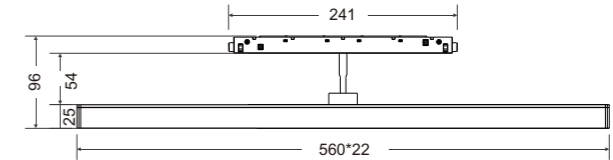
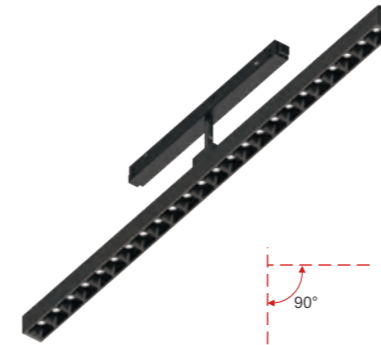
Order Options

SL26-31515						
Code	System LM	System W	Input Voltage	CRI	CCT	Beam
SL26-31515330	1100Lm	15W	DC48V	90	3000K	30°
SL26-31515430	1180Lm				4000K	

SL26-A280-13W Module

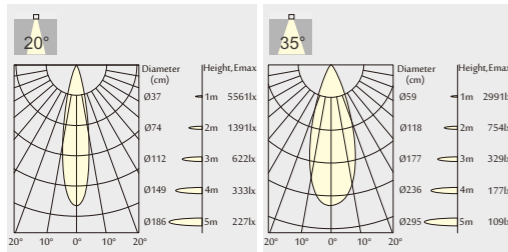


SL26-A560-26W Module



Module distribution for 3000K

13W 1100lm-1200lm

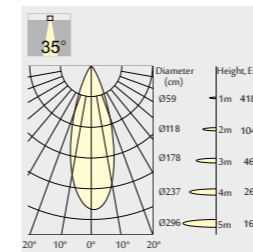


Order Options

SL26-A280						
Code	System LM	System W	Input Voltage	CRI	CCT	Beam
SL26-A28013320	1100Lm	13W	DC48V	90	3000K	20°
SL26-A28013420	1200Lm	13W	DC48V	90	4000K	20°
SL26-A28013335	1100Lm	13W	DC48V	90	3000K	35°
SL26-A28013435	1200Lm	13W	DC48V	90	4000K	35°

Module distribution for 3000K

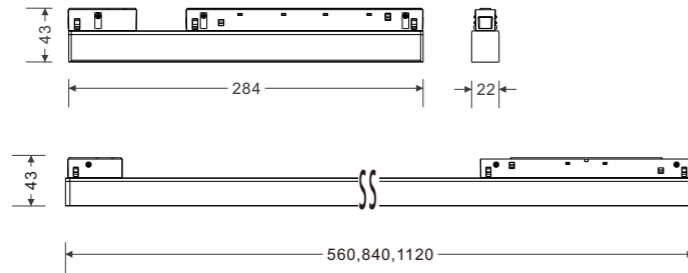
26W 2200lm



Order Options

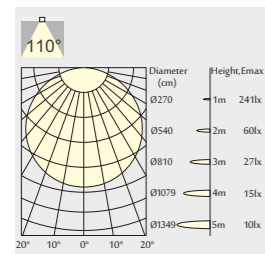
SL26-A560						
Code	System LM	System W	Input Voltage	CRI	CCT	Beam
SL26-A56013320	2200Lm	26W	DC48V	90	3000K	20°
SL26-A56013420	2400Lm	26W	DC48V	90	4000K	20°
SL26-A56013335	2200Lm	26W	DC48V	90	3000K	35°
SL26-A56013435	2400Lm	26W	DC48V	90	4000K	35°

SL26-G280-7W Module



Module distribution for 3000K

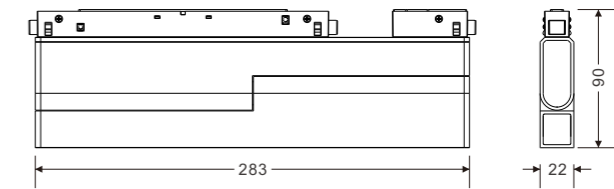
7W 400lm-450lm



Order Options

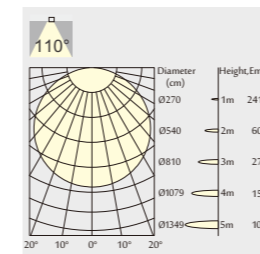
SL26-G280						
Code	System LM	System W	Input Voltage	CRI	CCT	Beam
SL26-G28073110	400Lm	7W	DC48V	90	3000K	110°
SL26-G28074110	450Lm				4000K	
SL26-G560						
SL26-G560133110	800Lm	13W	DC48V	90	3000K	110°
SL26-G560134110	850Lm				4000K	
SL26-G840						
SL26-G840193110	1200Lm	19W	DC48V	90	3000K	110°
SL26-G840194110	1300Lm				4000K	
SL26-G1120						
SL26-G1120263110	1600Lm	26W	DC48V	90	3000K	110°
SL26-G1120264110	1700Lm				4000K	

SL26-SG280-7W Module



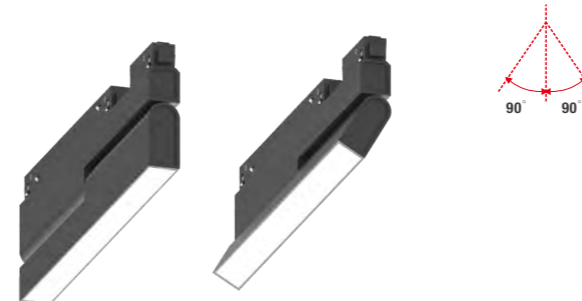
Module distribution for 3000K

7W 400lm-450lm



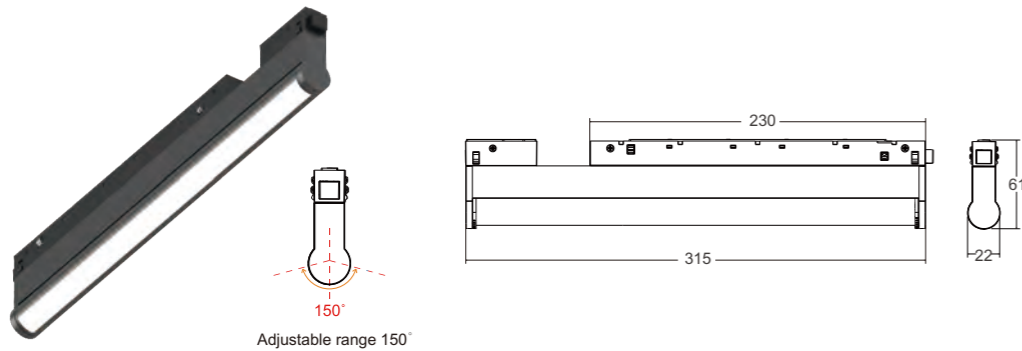
Order Options

SL26-SG280						
Code	System LM	System W	Input Voltage	CRI	CCT	Beam
SL26-SG28073110	400Lm	7W	DC48V	90	3000K	110°
SL26-SG28074110	450Lm				4000K	



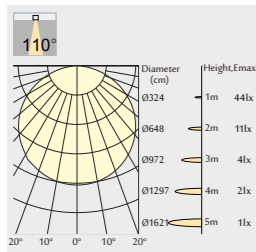
SL26-S315-10W Module

3000K (Standard) | CE CB IP20 | 120°



Module distribution for 3000K

10W 520lm

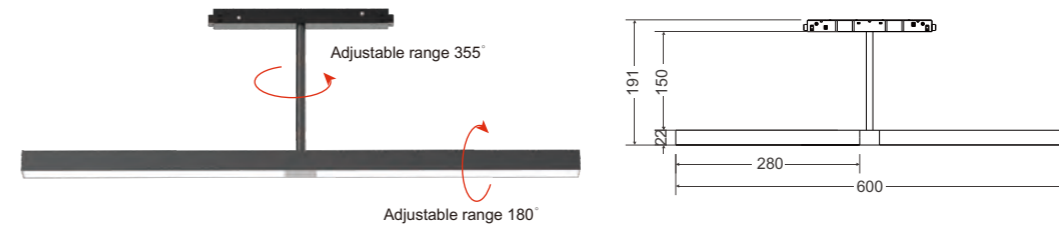


Order Options

SL26-S315						
Code	System LM	System W	Input Voltage	CRI	CCT	Beam
SL26-S315103120	500Lm	10W	DC48V	90	3000K	120°
SL26-S315104120	550Lm				4000K	120°

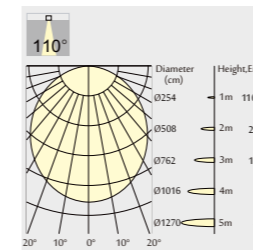
SL26-L600-13W Module

3000K (Standard) | CE CB IP20 | 110°



Module distribution for 3000K

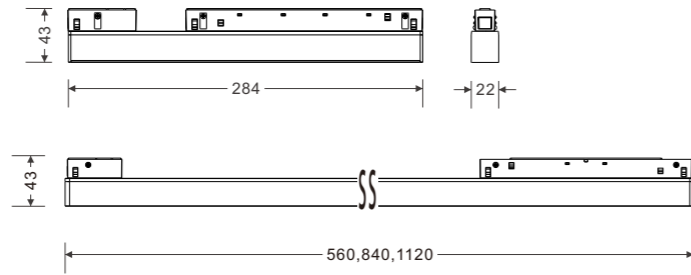
13W 800lm



Order Options

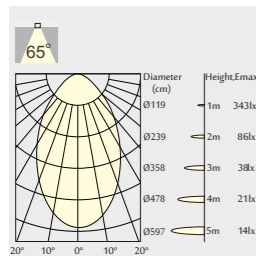
SL26-L600						
Code	System LM	System W	Input Voltage	CRI	CCT	Beam
SL26-L600133110	800Lm	13W	DC48V	90	3000K	110°
SL26-L600134110	900Lm				4000K	

SL26-C280-7W Module



Module distribution for 3000K

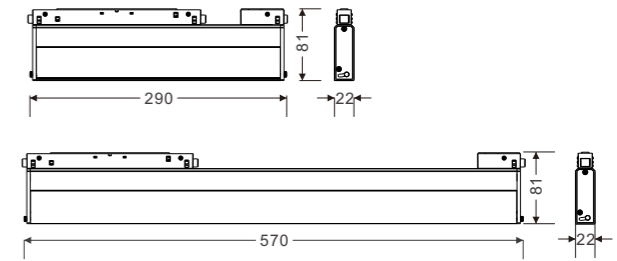
7W 380lm-420lm



Order Options

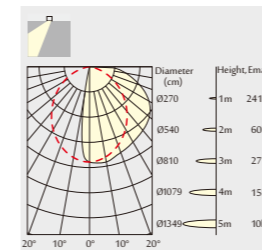
SL26-C280						
Code	System LM	System W	Input Voltage	CRI	CCT	Beam
SL26-C2807365	380Lm	7W	DC48V	90	3000K	65°
SL26-C2807465	420Lm	7W	DC48V	90	4000K	65°
SL26-C560						
SL26-C56013365	750Lm	13W	DC48V	90	3000K	65°
SL26-C56013465	800Lm	13W	DC48V	90	4000K	65°
SL26-C840						
SL26-C84019365	1100Lm	19W	DC48V	90	3000K	65°
SL26-C84019465	1200Lm	19W	DC48V	90	4000K	65°
SL26-C1120						
SL26-C112026365	1500Lm	26W	DC48V	90	3000K	65°
SL26-C112026465	1600Lm	26W	DC48V	90	4000K	65°

SL26-W280-7W Module



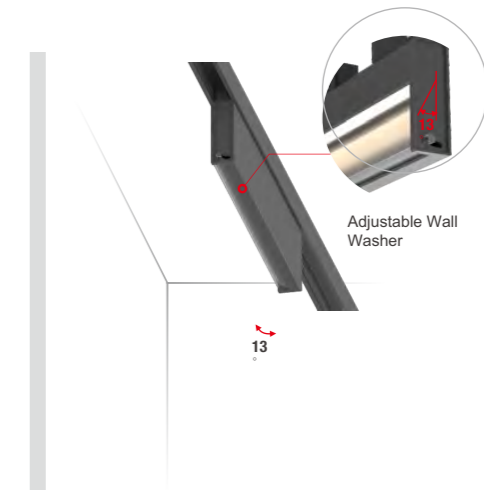
Module distribution for 3000K

7W 350lm-380lm

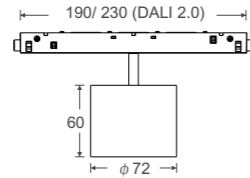


Order Options

SL26-C280						
Code	System LM	System W	Input Voltage	CRI	CCT	Beam
SL26-C2807365	350Lm	7W	DC48V	90	3000K	Wall Washer
SL26-C2807465	380Lm	7W	DC48V	90	4000K	Wall Washer
SL26-C560						
SL26-C56013365	700Lm	13W	DC48V	90	3000K	Wall Washer
SL26-C56013465	750Lm	13W	DC48V	90	4000K	Wall Washer

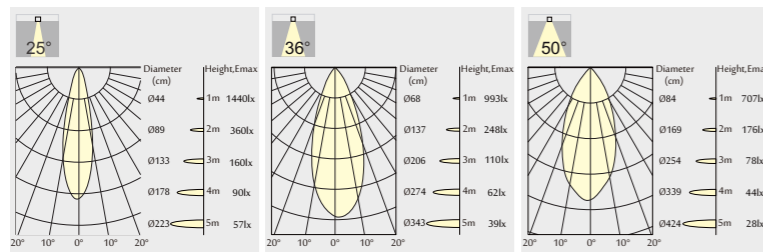


SL26-R72-10W Module



Module distribution for 3000K

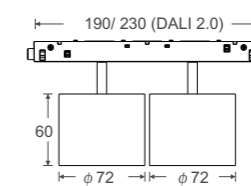
10W 600lm-800lm



Order Options

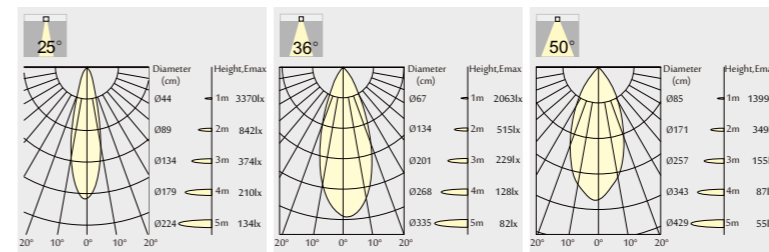
SL26-R72						
Code	System LM	System W	Input Voltage	CRI	CCT	Beam
SL26-R7210325	700Lm	10W	DC48V	90	3000K	25°
SL26-R7210425	750Lm	10W	DC48V	90	4000K	25°
SL26-R7210336	750Lm	10W	DC48V	90	3000K	36°
SL26-R7210436	800Lm	10W	DC48V	90	4000K	36°
SL26-R7210350	750Lm	10W	DC48V	90	3000K	50°
SL26-R7210450	800Lm	10W	DC48V	90	4000K	50°

SL26-R72T-20W Module



Module distribution for 3000K

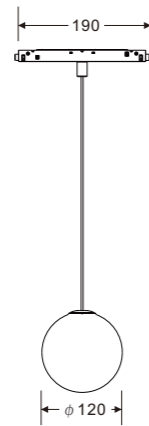
20W 1400lm-1500lm



Order Options

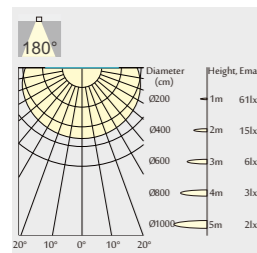
SL26-R72T						
Code	System LM	System W	Input Voltage	CRI	CCT	Beam
SL26-R72T20325	1400Lm	20W	DC48V	90	3000K	25°
SL26-R72T20425	1500Lm	20W	DC48V	90	4000K	25°
SL26-R72T20336	1500Lm	20W	DC48V	90	3000K	36°
SL26-R72T20436	1600Lm	20W	DC48V	90	4000K	36°
SL26-R72T20350	1500Lm	20W	DC48V	90	3000K	50°
SL26-R72T20450	1600Lm	20W	DC48V	90	4000K	50°

SL26-P120-10W Module



Module distribution for 3000K

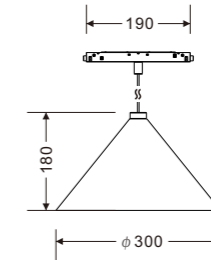
10W 600lm-700lm



Order Options

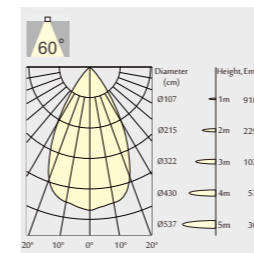
SL26-P120						
Code	System LM	System W	Input Voltage	CRI	CCT	Beam
SL26-P120103180	650Lm	10W	DC48V	90	3000K	180°
SL26-P120104180	700Lm				4000K	

SL26-P300-18W Module



Module distribution for 3000K

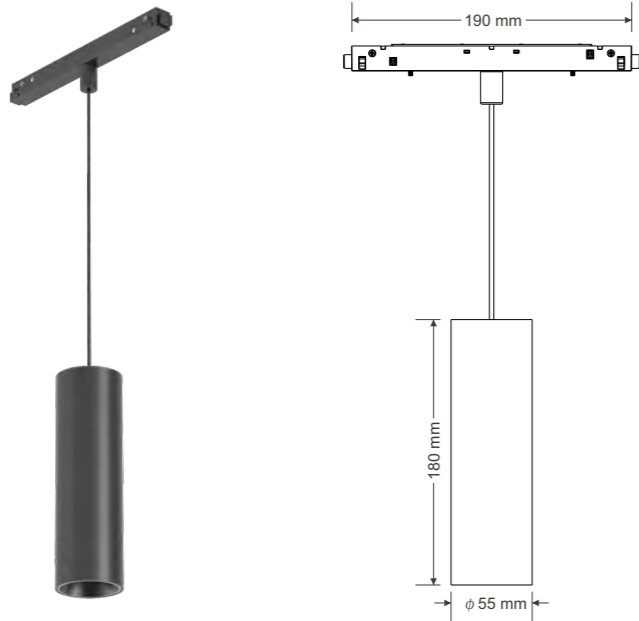
18W 1200lm



Order Options

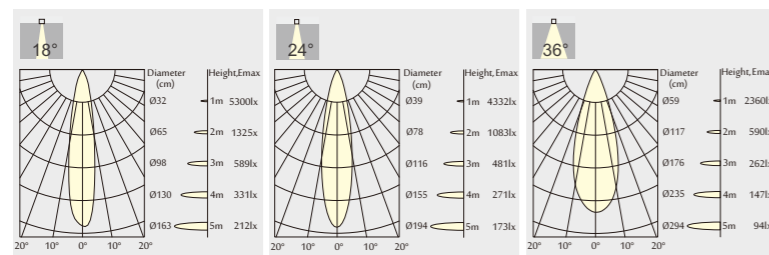
SL26-P300						
Code	System LM	System W	Input Voltage	CRI	CCT	Beam
SL26-P30018360	1100Lm	18W	DC48V	90	3000K	60°
SL26-P30018460	1200Lm				4000K	60°

SL26-P55-14W Module



Module distribution for 3000K

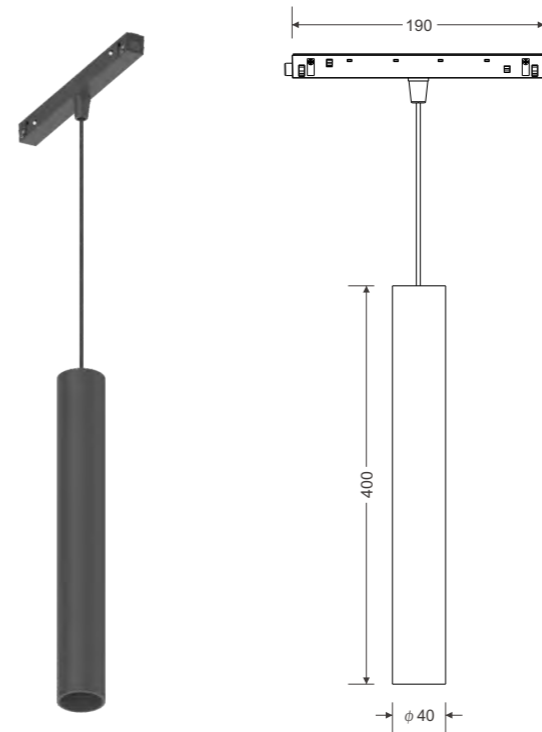
14W 950lm-1000lm



Order Options

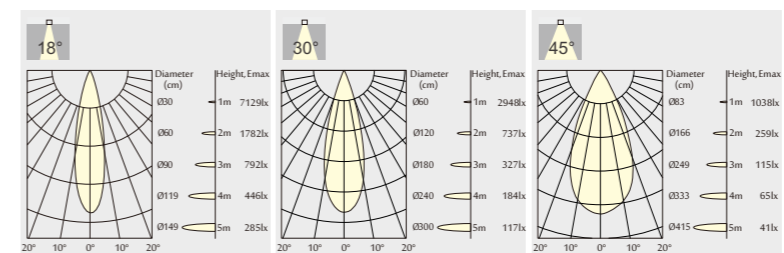
SL26-P55						
Code	System LM	System W	Input Voltage	CRI	CCT	Beam
SL26-P5514318	950Lm		DC48V	90	3000K	18°
SL26-P5514418	1000Lm	14W	DC48V	90	4000K	18°
SL26-P5514324	950Lm		DC48V	90	3000K	24°
SL26-P5514424	1000Lm	14W	DC48V	90	4000K	24°
SL26-P5514336	950Lm		DC48V	90	3000K	36°
SL26-P5514436	1000Lm	14W	DC48V	90	4000K	36°

SL26-P40-14W Module



Module distribution for 3000K

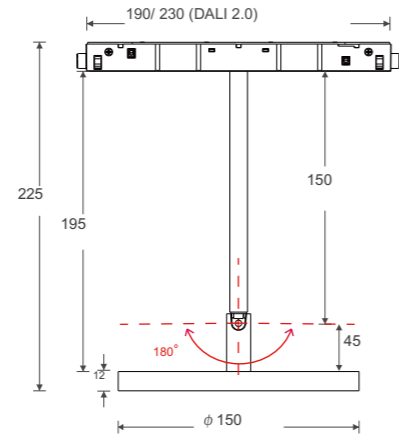
12W 600lm-800lm



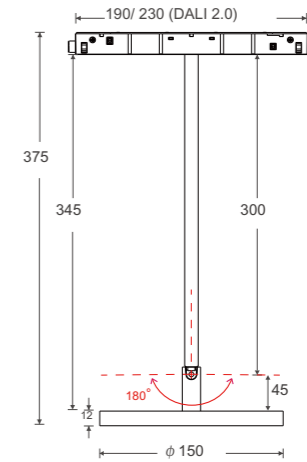
Order Options

SL26-P40						
Code	System LM	System W	Input Voltage	CRI	CCT	Beam
SL26-P4014318	750Lm		DC48V	90	3000K	18°
SL26-P4014418	800Lm	12W	DC48V	90	4000K	18°
SL26-P4014324	750Lm		DC48V	90	3000K	30°
SL26-P4014424	800Lm	12W	DC48V	90	4000K	30°
SL26-P4014336	600Lm		DC48V	90	3000K	45°
SL26-P4014436	650Lm	12W	DC48V	90	4000K	45°

SL26-P150G-12W Module

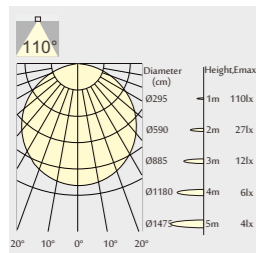


SL26-P150C-12W Module



Module distribution for 3000K

12W 1050lm

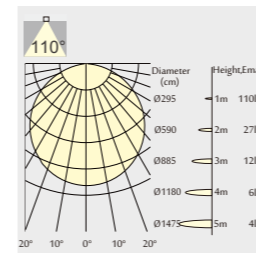


Order Options

SL26-P150G						
Code	System LM	System W	Input Voltage	CRI	CCT	Beam
SL26-P150G123110	750Lm				3000K	
SL26-P150G124110	800Lm				4000K	
SL26-P300G123110	750Lm	12W	DC48V	90	3000K	110°
SL26-P300G124110	800Lm				4000K	

Module distribution for 3000K

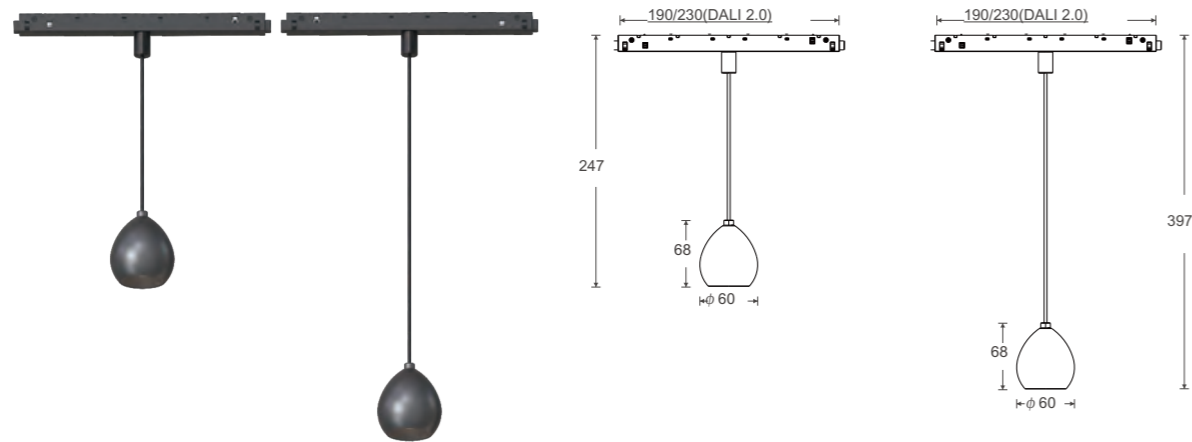
12W 1050lm



Order Options

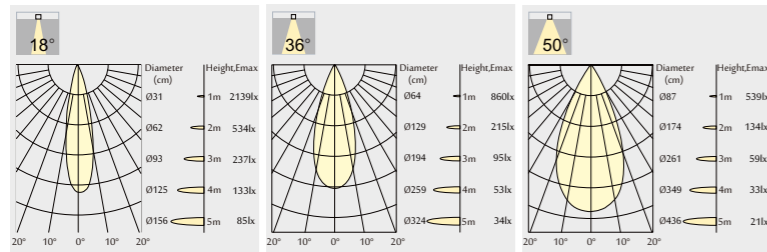
SL26-P150C						
Code	System LM	System W	Input Voltage	CRI	CCT	Beam
SL26-P150C123110	750Lm				3000K	
SL26-P150C124110	800Lm				4000K	
SL26-P300C123110	750Lm	12W	DC48V	90	3000K	100°
SL26-P300C124110	800Lm				4000K	

SL26-S160-5W Module



Module distribution for 3000K

5W 500lm



Order Options

SL26-M160						
Code	System LM	System W	Input Voltage	CRI	CCT	Beam
SL26-S1505318	500Lm	5W	DC48V	90	3000K	18°
SL26-S1505418	550Lm	5W	DC48V	90	4000K	18°
SL26-S1505324	500Lm	5W	DC48V	90	3000K	24°
SL26-S1505424	550Lm	5W	DC48V	90	4000K	24°
SL26-S1505336	500Lm	5W	DC48V	90	3000K	36°
SL26-S1505436	550Lm	5W	DC48V	90	4000K	36°
SL26-S1505350	500Lm	5W	DC48V	90	3000K	50°
SL26-S1505450	550Lm	5W	DC48V	90	4000K	50°

