

FEATURES

The EM-SIGN 4 is a versatile and space-saving double-sided LED Exit Sign designed for both wall and ceiling installation.

It offers a choice of three variations: Switchable Maintained/Non-Maintained, DALI-2 Self-Test, or the LiteMesh ready wireless model, catering to different needs.

Each unit features a PMMA screen printed legend plate, ensuring a remarkable 25m viewing range. Additionally, the legend panels come in three options: arrow up, arrow down, or arrow left/right, with the arrow left/right being double-sided.

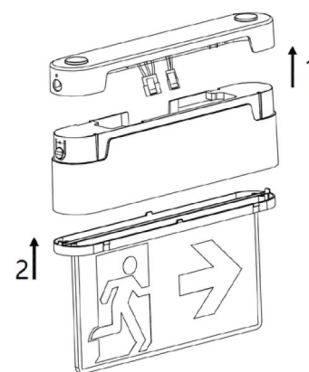
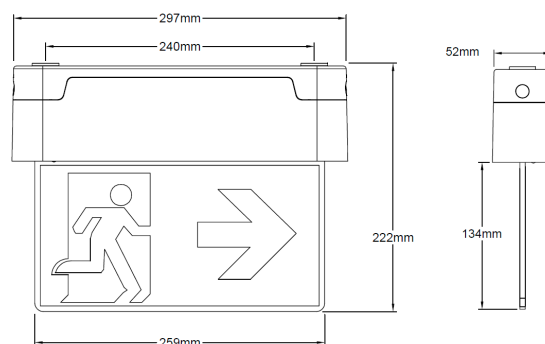
Notably, the unit utilizes batteries that not only have double the lifespan of traditional emergency lighting batteries but also consume significantly less power during operation. This makes it an efficient and reliable solution for exit sign requirements.



SPECIFICATION

Installation	Surface
Viewing Distance Options	25m
LED	Samsung LEDs
Input Voltage	230 – 240V 50Hz
Power (Maintained)	5.7W 34mA
Power (Non-Maintained)	5.4W 30mA
Duration	3 hours
Battery Type	3.2V 3.8Ah LiFePO4 Cells
Recharge Period	24 hours
Charge Current	225mA nominal
IP Rating	IP20
Material	White Polycarbonate Module
Dimensions	W 297 mm x H 222 mm x D 52 mm
Legend Panels	Arrow up Arrow Down Arrow Left/Right
Temperature	25°C ~ 55°C
Weight	0.82kg
Conformity	UKCA, DDP
Warranty	5 Years

DIMENSIONS



PRODUCT ORDER CODE

EXAMPLE: EM-SIGN4-SWMLR

PREFIX	INSALLATION	FINISH	EMERGENCY	PANELS
EM-SIGN4-	S surface	W white	M maintained emergency NM non-maintained emergency DE DALI self-test	AU arrow up - single AD arrow down - single ALR arrow left/right - double

