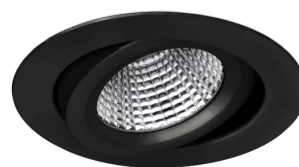
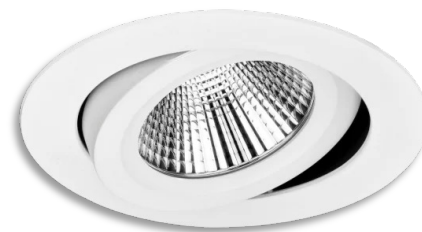


## FEATURES

LEO is a high-performance LED downlight designed to deliver optimal light distribution for all your interior lighting needs. With its cutting-edge technology the LEO provides unparalleled brilliance and efficiency.

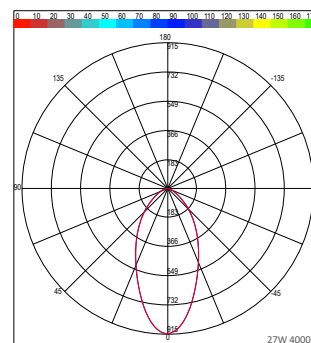
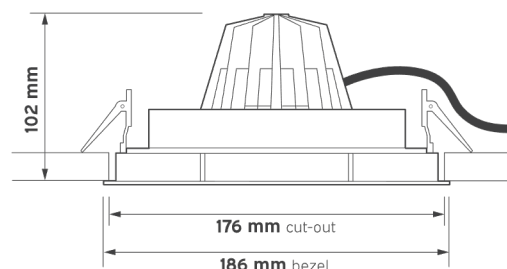
- Efficacy up to 105 lm/W
- Multi-faceted 40° reflector supplied as standard
- Low glare UGR<19
- Height only 102 mm using optimised passive thermodynamics
- Dimming, emergency, DALI options



## SPECIFICATION

Luminous Flux	625 - 4950 Lumens
Colour Temperature CCT	3000K   4000K
Power Consumption	6W   12W   18W   27W   32W   48W
CRI	>80
Efficacy	Up to 105 lm/W
Optic	Multi-faceted 40°
UGR	<19
MacAdam	3
Dimming	Fixed Output   DALI
Operating Voltage	220 - 240V
Finish	White   Black
Installation	Recessed
Dimensions	∅ 186 mm x 102 mm
Cut-out Dimensions	∅ 176 mm
Ingress Protection	IP20
Lifetime	50,000hrs L80/B10
Weight	0.5 kg
Operating Temperature	-20°C ~45°C
Conformity	Thermal Management System No UV or IR Emissions, UKCA
Warranty	5 Years

## DIMENSIONS



## PRODUCT ORDER CODE

EXAMPLE: LEO/12W/4K/40/FO/WH

PREFIX	WATTAGE	CCT	BEAM ANGLE	DRIVER	FINISH	EMERGENCY	
LEO	6W	3K 3000K	40 40° multi-faceted	FO fixed output	WH white	ST standard emergency	
	12W			DALI DALI dimming	BL black	DEM DALI emergency	
	18W	4K 4000K					CAS casambi
	27W						
	32W						
	48W						

