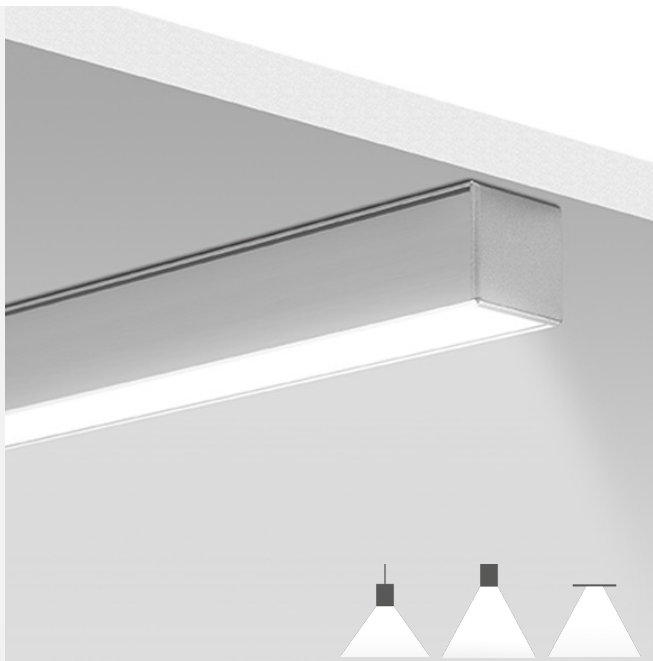


### FEATURES

I-Line 9 is a slimline linear luminaire ideal for contemporary architectural applications.

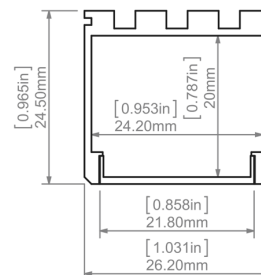
- Surface mounted, suspended or recessed
- Colour temperature options
- High lumen efficacy, CRI90+
- Low-glare optic diffusers
- Standard and made-to-measure lengths
- Connector plates available for custom configurations
- Extruded aluminium channel
- Anodised or painted profile finish
- Compact driver, DALI dimming and Casambi controls
- Plug-and-play wiring for quick installation



### SPECIFICATION

Colour Temperature CCT	2700K   3000K   4000K   TW   RGBW   D2W
Installation	Surface   Suspended   Recessed
Distribution	Direct
CRI	>90
Optic/Diffuser	Frosted Opal   Clear
Dimming/Controls	Fixed Output   DALI   Casambi Control
Finish	White   Black   Silver Anodised
Dimensions	W 26.2 mm x H 24.5 mm
Standard Lengths	1000 mm   2000 mm (custom lengths available on request)
Material	Aluminium
Accessories	End Cap   Mounting Bracket   Suspension Fasteners   Connectors Plates
Ingress Protection	IP20   IP65 On Request
Lifetime	50,000hrs
Operating Temperature	-25°C~45°C
Conformity	No UV or IR Emissions, UKCA
Warranty	5 Years

### DIMENSIONS



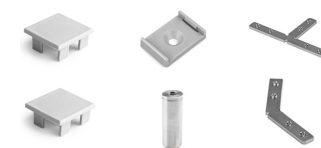
frosted opal  
clip-in diffuser  
PC  
4 mm x 21 mm  
110°



clear  
clip-in diffuser  
PC  
4 mm x 21 mm  
70°



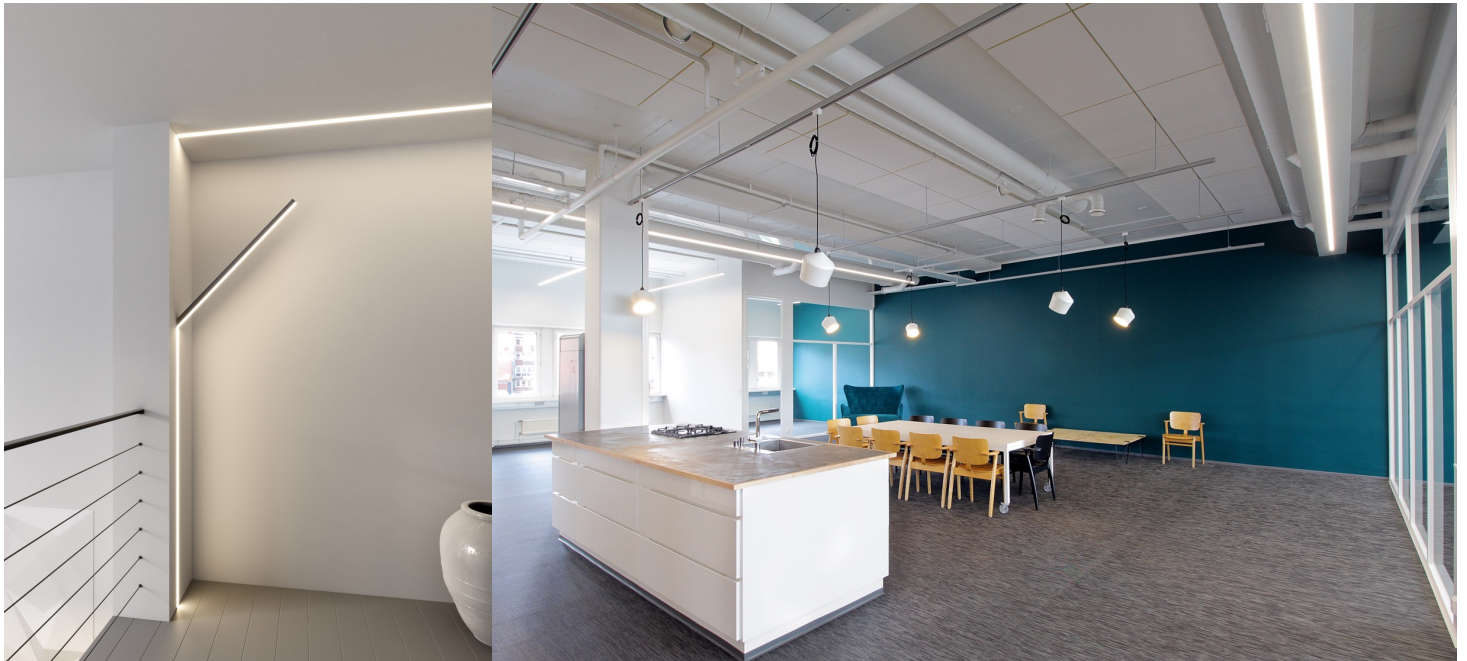
clip-in end caps  
surface bracket  
suspension fasteners  
connector plates



### PRODUCT ORDER CODE

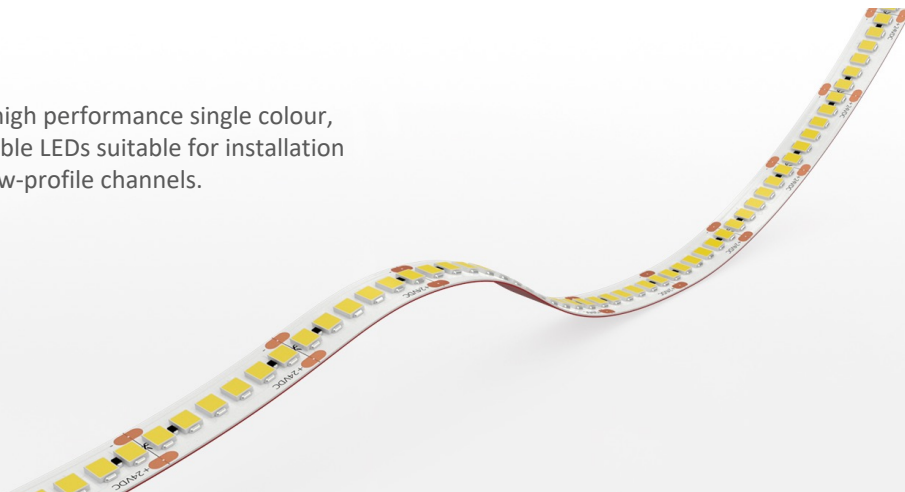
EXAMPLE: I-LINE9/SUR/3K/O/DALI/A/2000

PREFIX	INSALLATION	CCT	OPTIC - DIFFUSER	DIMMING - CONTROLS	FINISH	LENGTH
I-LINE9	<b>SUR</b> surface	<b>27K</b> 2700K	<b>O</b> frosted opal	<b>FO</b> fixed output	<b>A</b> anodised aluminium	<b>1000</b> 1000 mm
	<b>SUS</b> suspended	<b>3K</b> 3000K	<b>C</b> clear	<b>DALI</b> DALI dimming	<b>WH</b> white RAL 9010	<b>2000</b> 2000 mm
	<b>REC</b> recessed channel	<b>4K</b> 4000K		<b>CAS</b> casambi	<b>BL</b> black RAL 9005	<b>---</b> custom length
		<b>TW</b> tunable white			<b>RAL</b> custom RAL colour	
	<b>RGBW</b> colour mixing					
	<b>DW</b> dim to warm					



### LED OPTIONS

We supply a variety of high performance single colour, tunable and RGBW flexible LEDs suitable for installation in all our linear I-Line low-profile channels.



#### I-FLEX 4.8 W/m



2700K | 3000K | 4000K  
Up to 65 lm/W  
CRI95  
24V DC  
60000 hrs  
IP20 | IP65  
LEDs: 60 p/m  
Width: 8 mm  
Cut point: 100 mm  
Max run: 10 m

#### I-FLEX 9.6 W/m



2700K | 3000K | 4000K  
Up to 83 lm/W  
CRI95  
24V DC  
60000 hrs  
IP20 | IP65  
LEDs: 120 p/m  
Width: 8 mm  
Cut point: 50 mm  
Max run: 10 m

#### I-FLEX 14.4 W/m



2700K | 3000K | 4000K  
Up to 109 lm/W  
CRI95  
24V DC  
60000 hrs  
IP20 | IP65  
LEDs: 120 p/m  
Width: 8 mm  
Cut point: 50 mm  
Max run: 10 m

#### I-FLEX 16.4 W/m



2700K | 3000K | 4000K  
Up to 97 lm/W  
CRI95  
24V DC  
60000 hrs  
IP20 | IP65  
LEDs: 266 p/m  
Width: 10 mm  
Cut point: 26.3 mm  
Max run: 10 m

#### I-FLEX RGBW 19.2 W/m



RGBW  
W 2700K - 6000K  
6K up to 95 lm/W  
CRI95  
24V DC  
60000 hrs  
IP20 | IP65  
LEDs: 288 p/m  
Width: 12 mm  
Cut point: 62.5 mm  
Max run: 5 m

#### I-FLEX TW 17.1 W/m



Tunable White  
W 2700K - 6000K  
3-wire adjustable  
6K up to 104 lm/W  
CRI90  
24V DC  
38000 hrs  
IP20 | IP65  
Width: 10 mm  
Cut point: 14.2 mm  
Max run: 5 m

#### I-FLEX D2W 14.4 W/m



Dim to Warm  
2700K - 5000K  
6K up to 86 lm/W  
CRI90  
24V DC  
60000 hrs  
IP20  
LEDs: 288 p/m  
Width: 10 mm  
Cut point: 55.5 mm  
Max run: 4 m