

## FEATURES

- Reliable solution without power supply
- Smooth flicker-free dimming to 0,1%
- Practically no inrush current
- Warm dim version available

## SPRINGS

Standard with CS spring (concrete/gyproc). Also available as above with WS spring (gyproc/metal).

HV-FD  
40°

HV-FD  
80°

## COLOURS

Available colours:

Matt white RAL 9016 (XX=MW)  
Matt black RAL 9005 (XX=BL)

# Fluxe 75 HV-FD

Fixed

## DRIVERLESS

Can be connected directly to 220-240V

## SPECIFICATIONS

Input voltage	220-240Vac
Beam angle (FWHM)	40° / 80°
Fixture material	Housing: Die cast aluminium / Reflector glass: Polycarbonate
Environment	Indoor
IK rate	IK03
Inrush current (peak / duration)	<100mA / 0 µs (soft start)
Max. quantity per type B 16A	360 pcs.
Mains surge capability (between L - N)	2 kV (differential mode (DM))
Mains surge capability (between L/N - PE)	4 kV (common mode (CM))
% Flicker (Conform IEEE P1789 Standard)	Typical 0,4%
Flicker index	<0,1
Dimming range	100-1%
THD	15%
Operating temperature (Ta)	-20°C / +45°C <sup>1</sup>
Safety marks	EN60598 / EN62031 / EN62471
EMC compliance	EN55015
Colour consistency (SDCM)	MacAdam step 3
Warranty	7 years * (within the European Union and the countries of the Free Trade Association for products delivered after 1 May 2015)
Energy class	These products contains a light source of energy efficiency class G

This luminaire contains built-in LED lamps. There are no exchangeable parts inside the luminaire. EU 874/2012

<sup>1</sup> In applications with a flat roof (fi. car showrooms) the temperatures may exceed 45°C. Please ask our sales office for a special driver.

Only when the product is installed in a closed ceiling it may be exposed to water splashes, and only on its front side.

IP20

IP44

21-04-2022

## FLUXE 75 220-240V



**Connection box 3P**  
82x43x26 mm  
Possibility for looping by 2 cables  
max. Ø 10mm (H03/H05).

### ITEM SPECIFICATIONS (PART A)

Description	Item code CS	Item code WS	Input	W	Lm	Lm/W	CRI (typ.)	UGR	Pf
Fluxe 75 HV-FD 2700K 600 Lm 40° Triac dim	802A03XX5A02	802A03XX8A02	220-240V	10,5	600	57	93	14,7	0,99
Fluxe 75 HV-FD 3000K 600 Lm 40° Triac dim	802A03XX5C02	802A03XX8C02	220-240V	10,3	600	58	93	14,7	0,99
Fluxe 75 HV-FD 4000K 600 Lm 40° Triac dim	802A03XX5E02	802A03XX8E02	220-240V	10,1	600	59	93	14,7	0,99
Fluxe 75 HV-FD 2200-3000K 600 Lm 40° Triac dim	802A03XX5G02	802A03XX8G02	220-240V	10,3	600	58	93	14,7	0,99
Fluxe 75 HV-FD 2700K 600 Lm 80° Triac dim	802A03XX5B02	802A03XX8B02	220-240V	10,5	600	57	93	25,9	0,99
Fluxe 75 HV-FD 3000K 600 Lm 80° Triac dim	802A03XX5D02	802A03XX8D02	220-240V	10,3	600	58	93	25,9	0,99
Fluxe 75 HV-FD 4000K 600 Lm 80° Triac dim	802A03XX5F02	802A03XX8F02	220-240V	10,1	600	59	93	25,9	0,99
Fluxe 75 HV-FD 2200-3000K 600 Lm 80° Triac dim	802A03XX5H02	802A03XX8H02	220-240V	10,3	600	58	93	25,9	0,99

### ITEM SPECIFICATIONS (PART B)

Description	Safety class	Energy class	Weight	Dimensions single carton	Quantity per carton	Expected lifespan (25°C)		
						L70B50	L80B50	L90B50
Fluxe 75 HV-FD 2700K 600 Lm 40° Triac dim	I	G	322 gr	105x105x61 mm	42 pcs	>70.000 hrs	>70.000 hrs	>54.000 hrs
Fluxe 75 HV-FD 3000K 600 Lm 40° Triac dim	I	G	322 gr	105x105x61 mm	42 pcs	>70.000 hrs	>70.000 hrs	>54.000 hrs
Fluxe 75 HV-FD 4000K 600 Lm 40° Triac dim	I	G	322 gr	105x105x61 mm	42 pcs	>70.000 hrs	>70.000 hrs	>54.000 hrs
Fluxe 75 HV-FD 2200-3000K 600 Lm 40° Triac dim	I	G	322 gr	105x105x61 mm	42 pcs	>70.000 hrs	>70.000 hrs	>54.000 hrs
Fluxe 75 HV-FD 2700K 600 Lm 80° Triac dim	I	G	322 gr	105x105x61 mm	42 pcs	>70.000 hrs	>70.000 hrs	>54.000 hrs
Fluxe 75 HV-FD 3000K 600 Lm 80° Triac dim	I	G	322 gr	105x105x61 mm	42 pcs	>70.000 hrs	>70.000 hrs	>54.000 hrs
Fluxe 75 HV-FD 4000K 600 Lm 80° Triac dim	I	G	322 gr	105x105x61 mm	42 pcs	>70.000 hrs	>70.000 hrs	>54.000 hrs
Fluxe 75 HV-FD 2200-3000K 600 Lm 80° Triac dim	I	G	322 gr	105x105x61 mm	42 pcs	>70.000 hrs	>70.000 hrs	>54.000 hrs

All values are measured at 230V (+/- 7%)

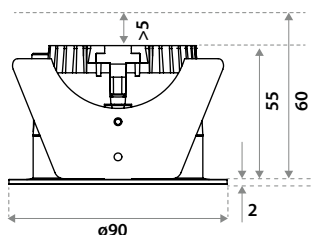
### FIRE RATING TUBE

Description	Item code	Hole size	time
Fire rating tube 75	009G03MW0000	ø76x86mm	90 min.



**⚠** Only in combination with WS (wire) springs versions.

### DIMENSIONS



### HOLE SIZE



**Using CS springs:** Ø 75 mm.  
Thickness ceiling 5-60 mm  
& recess depth 60 mm.



**Using WS springs:** Ø 77 mm.  
Thickness ceiling 1-55 mm  
& recess depth 60 mm.